

Understanding Your PSAT/NMSQT Results

4 Major Parts of Your PSAT/NMSQT Results

Your Scores

Your Skills

Your Answers

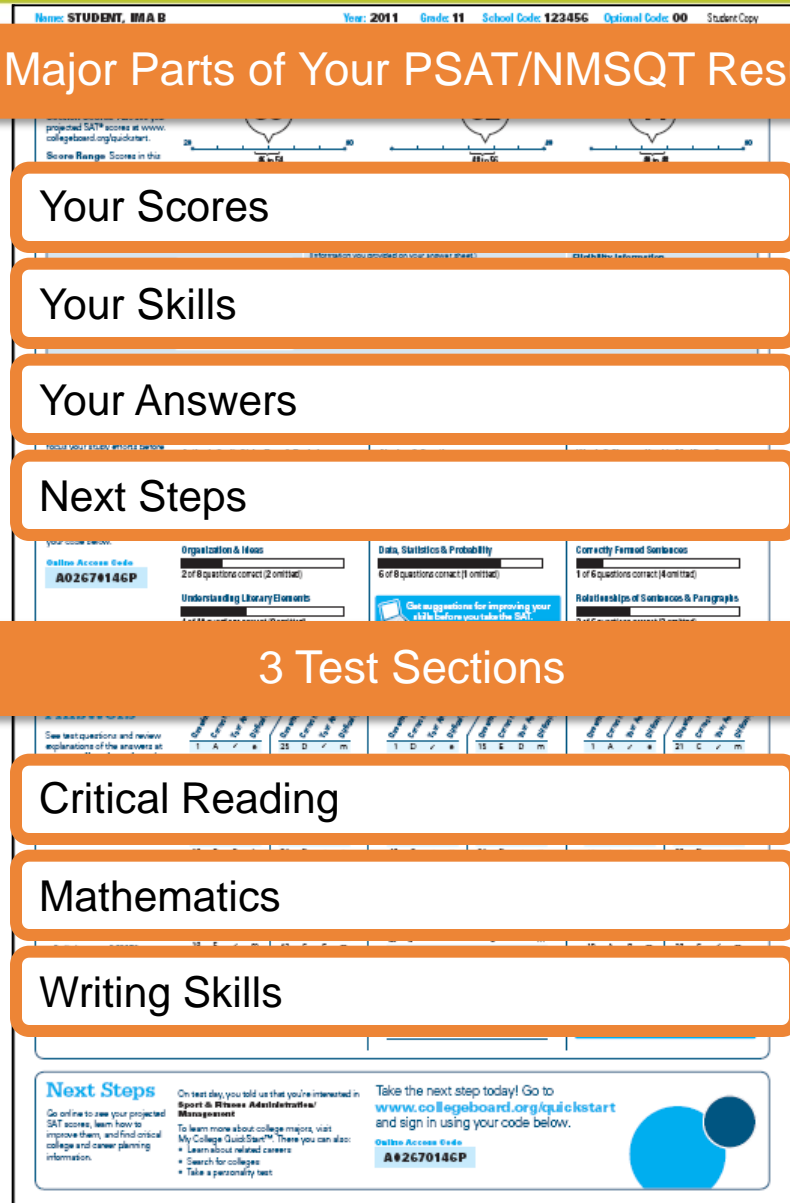
Next Steps

3 Test Sections

Critical Reading

Mathematics

Writing Skills



Your Scores

Score

You can see your projected SAT score online in My College QuickStart (www.collegeboard.org/quickstart).

Score Range


Percentile

If you are a junior, your scores are compared to those of other juniors.

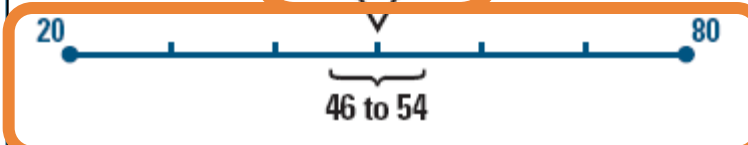
If you are a sophomore or younger student, your scores are compared to those of sophomores.

Name: STUDENT, MIA B Year: 2011 Grade: 11 School Code: 123456 Optional Code: 00 Student Copy


Critical Reading



50



20 ————— 80
46 to 54



You scored higher than **55%** of juniors.

<p>You can also ask your counselor for a copy of your test back; back to you can review the questions.</p>		<p>5 B ✓ h 39 C ✓ *</p>	<p>1 B ✓ *</p>	<p>10 D A h</p>	<p>21 D A m</p>																								
<p>6 D ✓ *</p>	<p>30 D G m</p>	<p>6 B ✓ *</p>	<p>20 D C h</p>	<p>6 D ✓ *</p>	<p>26 A B ✓ *</p>																								
<p>7 B ✓ m</p>	<p>31 A B h</p>	<p>7 C ✓ *</p>	<p>21 B ✓ *</p>	<p>7 A C m</p>	<p>27 A B ✓ *</p>																								
<p>8 D ✓ *</p>	<p>32 G ✓ h</p>	<p>8 A ✓ m</p>	<p>22 C ✓ *</p>	<p>8 C G h</p>	<p>28 C A ✓ *</p>																								
<p>9 B ✓ m</p>	<p>33 D A h</p>	<p>9 B ✓ m</p>	<p>23 A ✓ m</p>	<p>9 C D m</p>	<p>29 C A m</p>																								
<p>10 B ✓ h</p>	<p>34 D ✓ *</p>	<p>10 C ✓ m</p>	<p>24 D ✓ m</p>	<p>10 A C h</p>	<p>30 D ✓ m</p>																								
<p>11 D ✓ h</p>	<p>35 A ✓ *</p>	<p>11 B ✓ m</p>	<p>25 B ✓ m</p>	<p>11 B G h</p>	<p>31 B A h</p>																								
<p>12 C ✓ m</p>	<p>36 E A *</p>	<p>12 C ✓ m</p>	<p>26 D ✓ *</p>	<p>12 B G m</p>	<p>32 A ✓ h</p>																								
<p>13 A ✓ m</p>	<p>37 C ✓ m</p>	<p>13 B ✓ m</p>	<p>27 C A m</p>	<p>13 D G m</p>	<p>33 D C h</p>																								
<p>14 B A m</p>	<p>38 B ✓ m</p>	<p>14 A D h</p>	<p>28 A B m</p>	<p>14 D G m</p>	<p>34 D ✓ h</p>																								
<p>15 A ✓ *</p>	<p>39 D C h</p>	<table border="1"> <thead> <tr> <th>Correct Answer</th> <th>Your Answer</th> </tr> </thead> <tbody> <tr><td>39 ?</td><td>✓</td></tr> <tr><td>39 2</td><td>0</td></tr> <tr><td>39 3</td><td>0</td></tr> <tr><td>39 4.5 or 90</td><td>0</td></tr> <tr><td>39 1000</td><td>✓</td></tr> <tr><td>39 10, 12, 14, or 16</td><td>h</td></tr> <tr><td>39 45 or 16</td><td>0</td></tr> <tr><td>39 30</td><td>✓</td></tr> <tr><td>39 100</td><td>50.0</td></tr> <tr><td>39 50</td><td>4.2</td></tr> <tr><td>39 0</td><td>10</td></tr> </tbody> </table>		Correct Answer	Your Answer	39 ?	✓	39 2	0	39 3	0	39 4.5 or 90	0	39 1000	✓	39 10, 12, 14, or 16	h	39 45 or 16	0	39 30	✓	39 100	50.0	39 50	4.2	39 0	10	<p>15 C ✓ m</p>	<p>35 A D *</p>
Correct Answer	Your Answer																												
39 ?	✓																												
39 2	0																												
39 3	0																												
39 4.5 or 90	0																												
39 1000	✓																												
39 10, 12, 14, or 16	h																												
39 45 or 16	0																												
39 30	✓																												
39 100	50.0																												
39 50	4.2																												
39 0	10																												
<p>16 A ✓ *</p>	<p>40 C ✓ h</p>			<p>16 D G m</p>	<p>36 G A *</p>																								
<p>17 A ✓ *</p>	<p>41 D ✓ h</p>			<p>17 D ✓ *</p>	<p>37 B ✓ m</p>																								
<p>18 G ✓ m</p>	<p>42 C G m</p>			<p>18 A B m</p>	<p>38 C ✓ m</p>																								
<p>19 B ✓ m</p>	<p>43 C ✓ m</p>			<p>19 C G m</p>	<p>39 C ✓ h</p>																								
<p>20 B G m</p>	<p>44 C ✓ m</p>			<p>20 G ✓ m</p>																									
<p>21 G ✓ m</p>	<p>45 D G m</p>																												
<p>22 D B h</p>	<p>46 A B m</p>																												
<p>23 G ✓ m</p>	<p>47 C G *</p>																												
<p>24 A ✓ m</p>	<p>48 C A m</p>																												

Key
 ✓ Correct * Easy
 0 Incorrect m Medium h Hard

Scoring
 • Correct answer = PLUS 1 POINT.
 • Correct answer = 0 POINT.
 • Wrong answers to multiple-choice questions = MINUS 1/4 POINT.
 • Wrong answers to math questions 26-28 = NO LOST POINTS.
 • Points are totaled then converted to score on the 20-80 scale.

Next Steps
 Go online to see your projected SAT scores, learn how to improve them, and find critical college and career planning information.

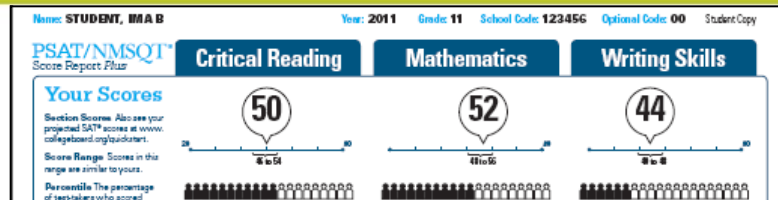
On test day, you told us that you're interested in **Sport & Fitness Administration** Management. To learn more about college majors, visit My College QuickStart™. There you can also:
 • Search for colleges
 • Take a personality test

Take the next step today! Go to www.collegeboard.org/quickstart and sign in using your code below.

Online Access Code
A#2670146P

Find out why you missed questions.
www.collegeboard.org/quickstart

National Merit Scholarship Corporation Information



National Merit Scholarship Corporation

National Merit Scholarship Corporation (NMSC) uses a Selection Index based on PSAT/NMSQT® scores as an initial screen of over 1.5 million students who enter its scholarship programs. (See reverse for more information.)

Your Selection Index

Sum of scores in critical reading, mathematics and writing skills.

146

Percentile

Compares your performance with college-bound juniors.

47

Entry Requirements

(Information you provided on your answer sheet.)

High school student:
Yes

U. S. citizenship:
Yes

Year to complete high school and enroll full-time in college:
2013

Years to be spent in grades 9–12:
4

Eligibility Information

If your Selection Index places you among the 55,000 high scorers who qualify for program recognition, you will be notified next September.

The Selection Index is the sum of your critical reading, mathematics and writing skills scores.

If it has an asterisk, you do not meet all of the eligibility requirements for the competition.

The Percentile compares your performance to that of other college-bound juniors.

The Entry Requirements section displays information you provided on your answer sheet.

Grid-in Answer Key

Question	Correct Answer	Your Answer
1	D	✓
2	G	✓
3	G	✓
4	C	✓
5	B	✓
6	B	✓
7	C	o
8	A	✓
9	B	✓
10	C	✓
11	B	o
12	C	✓
13	B	o
14	B	o
15	A	o
16	A	o
17	A	o
18	A	o
19	A	o
20	D	o
21	B	o
22	C	o
23	A	o
24	D	o
25	B	o
26	D	o
27	C	o
28	A	o
29	C	o
30	A	o
31	E	o
32	1000	o
33	10, 15, 14, or 16	o
34	05 or 10	o
35	20	o
36	104	o
37	12	o
38	4	o

Grid-in Answer Key

Question	Correct Answer	Your Answer
1	A	o
2	C	o
3	A	o
4	B	o
5	G	o
6	D	o
7	A	o
8	C	o
9	C	o
10	A	o
11	B	o
12	B	o
13	D	o
14	D	o
15	C	o
16	B	o
17	D	o
18	A	o
19	C	o
20	C	o

Grid-in Answer Key

Question	Correct Answer	Your Answer
1	A	o
2	C	o
3	A	o
4	B	o
5	G	o
6	D	o
7	A	o
8	C	o
9	C	o
10	A	o
11	B	o
12	B	o
13	D	o
14	D	o
15	C	o
16	B	o
17	D	o
18	A	o
19	C	o
20	C	o

Grid-in Answer Key

Question	Correct Answer	Your Answer
1	A	o
2	C	o
3	A	o
4	B	o
5	G	o
6	D	o
7	A	o
8	C	o
9	C	o
10	A	o
11	B	o
12	B	o
13	D	o
14	D	o
15	C	o
16	B	o
17	D	o
18	A	o
19	C	o
20	C	o

Grid-in Answer Key

Question	Correct Answer	Your Answer
1	A	o
2	C	o
3	A	o
4	B	o
5	G	o
6	D	o
7	A	o
8	C	o
9	C	o
10	A	o
11	B	o
12	B	o
13	D	o
14	D	o
15	C	o
16	B	o
17	D	o
18	A	o
19	C	o
20	C	o

Grid-in Answer Key

Question	Correct Answer	Your Answer
1	A	o
2	C	o
3	A	o
4	B	o
5	G	o
6	D	o
7	A	o
8	C	o
9	C	o
10	A	o
11	B	o
12	B	o
13	D	o
14	D	o
15	C	o
16	B	o
17	D	o
18	A	o
19	C	o
20	C	o

Grid-in Answer Key

Question	Correct Answer	Your Answer
1	A	o
2	C	o
3	A	o
4	B	o
5	G	o
6	D	o
7	A	o
8	C	o
9	C	o
10	A	o
11	B	o
12	B	o
13	D	o
14	D	o
15	C	o
16	B	o
17	D	o
18	A	o
19	C	o
20	C	o

Grid-in Answer Key

Question	Correct Answer	Your Answer
1	A	o
2	C	o
3	A	o
4	B	o
5	G	o
6	D	o
7	A	o
8	C	o
9	C	o
10	A	o
11	B	o
12	B	o
13	D	o
14	D	o
15	C	o
16	B	o
17	D	o
18	A	o
19	C	o
20	C	o

Grid-in Answer Key

Question	Correct Answer	Your Answer
1	A	o
2	C	o
3	A	o
4	B	o
5	G	o
6	D	o
7	A	o
8	C	o
9	C	o
10	A	o
11	B	o
12	B	o
13	D	o
14	D	o
15	C	o
16	B	o
17	D	o
18	A	o
19	C	o
20	C	o

Grid-in Answer Key

Question	Correct Answer	Your Answer
1	A	o
2	C	o
3	A	o
4	B	o
5	G	o
6	D	o
7	A	o
8	C	o
9	C	o
10	A	o
11	B	o
12	B	o
13	D	o
14	D	o
15	C	o
16	B	o
17	D	o
18	A	o
19	C	o
20	C	o

Grid-in Answer Key

Question	Correct Answer	Your Answer
1	A	o
2	C	o
3	A	o
4	B	o
5	G	o
6	D	o
7	A	o
8	C	o
9	C	o
10	A	o
11	B	o
12	B	o
13	D	o
14	D	o
15	C	o
16	B	o
17	D	o
18	A	o
19	C	o
20	C	o

Grid-in Answer Key

Question	Correct Answer	Your Answer
1	A	o
2	C	o
3	A	o
4	B	o
5	G	o
6	D	o
7	A	o
8	C	o
9	C	o
10	A	o
11	B	o
12	B	o
13	D	o
14	D	o
15	C	o
16	B	o
17	D	o
18	A	o
19	C	o
20	C	o

Grid-in Answer Key

Question	Correct Answer	Your Answer
1	A	o
2	C	o
3	A	o
4	B	o
5	G	o
6	D	o
7	A	o
8	C	o
9	C	o
10	A	o
11	B	o
12	B	o
13	D	o
14	D	o
15	C	o
16	B	o
17	D	o
18	A	o
19	C	o
20	C	o

Grid-in Answer Key

Question	Correct Answer	Your Answer
1	A	o
2	C	o
3	A	o
4	B	o
5	G	o
6	D	o
7	A	o
8	C	o
9	C	o
10	A	o
11	B	o
12	B	o
13	D	o
14	D	o
15	C	o
16	B	o
17	D	o
18	A	o
19	C	o
20	C	o

Grid-in Answer Key

Question	Correct Answer	Your Answer
1	A	o
2	C	o
3	A	o
4	B	o
5	G	o
6	D	o
7	A	o
8	C	o
9	C	o
10	A	o
11	B	o
12	B	o
13	D	o
14	D	o
15	C	o
16	B	o
17	D	o
18	A	o
19	C	o
20	C	o

Grid-in Answer Key

Question	Correct Answer	Your Answer
1	A	o
2	C	o
3	A	o
4	B	o
5	G	o
6	D	o
7	A	o
8	C	o
9	C	o
10	A	o
11	B	o
12	B	o
13	D	o
14	D	o
15	C	o
16	B	o
17	D	o
18	A	o
19	C	o
20	C	o

Grid-in Answer Key

Question	Correct Answer	Your Answer
1	A	o
2	C	o
3	A	o
4	B	o
5	G	o
6	D	o
7	A	o
8	C	o
9	C	o
10	A	o
11	B	o
12	B	o
13	D	o
14	D	o
15	C	o
16	B	o
17	D	o
18	A	o
19	C	o
20	C	o

Grid-in Answer Key

Question	Correct Answer	Your Answer
1	A	o
2	C	o
3	A	o
4	B	o
5	G	o
6	D	o
7	A	o
8	C	o
9	C	o
10	A	o
11	B	o
12	B	o
13	D	o
14	D	o
15	C	o
16	B	o
17	D	o
18	A	o
19	C	o
20	C	o

Grid-in Answer Key

Question	Correct Answer	Your Answer
1	A	o
2	C	o
3	A	o
4	B	o
5	G	o
6	D	o
7	A	o
8	C	o
9	C	o
10	A	o
11	B	o
12	B	o
13	D	o
14	D	o
15	C	o
16	B	o
17	D	o
18	A	o
19	C	o
20	C	o

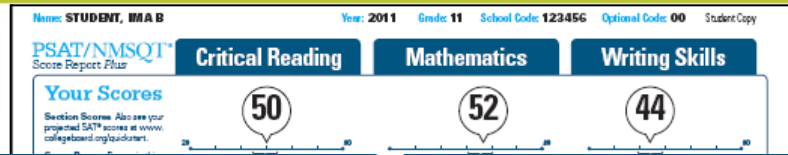
Grid-in Answer Key

Question	Correct Answer	Your Answer
1	A	o
2	C	o
3	A	o
4	B	o
5	G	o
6	D	o
7	A	o
8	C	o
9	C	o
10	A	o
11	B	o
12	B	o
13	D	o
14	D	o
15	C	o
16	B	o
17	D	o
18	A	o
19	C	o
20	C	o

Grid-in Answer Key

Question	Correct Answer	Your Answer
1	A	o
2	C	o
3	A	o
4	B	o
5	G	o
6	D	o
7	A	o
8	C	o
9	C	o
10	A	o

Your Skills



Your Skills

These skill categories can help you understand your score and focus your study efforts before you take the SAT.

To learn more about your skills and review suggestions for improvement based on your test performance, visit www.collegeboard.com/quickstart and sign in using your code below.

Online Access Code
A02670146P

Determining the Meaning of Words



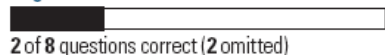
Author's Craft: Style, Tone & Technique



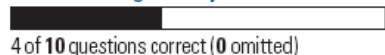
Reasoning & Inference



Organization & Ideas



Understanding Literary Elements



Number & Operations



Algebra & Functions



Geometry & Measurement

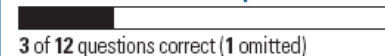


Data, Statistics & Probability

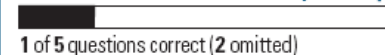


Get suggestions for improving your skills before you take the SAT.
www.collegeboard.com/quickstart

Grammatical Relationships between Words



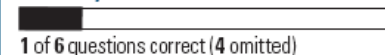
Words & Phrases Used to Modify or Compare



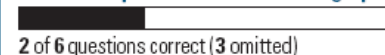
Phrases & Clauses



Correctly Formed Sentences

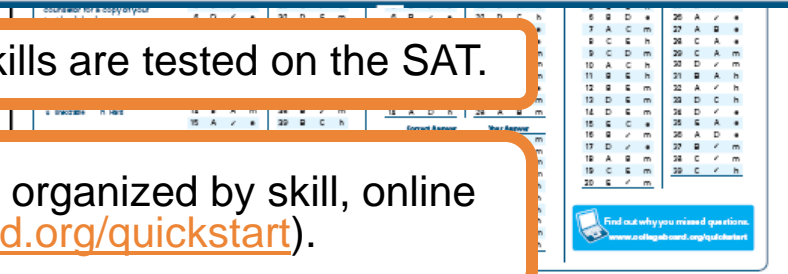


Relationships of Sentences & Paragraphs



See how you did on each skill. The same skills are tested on the SAT.

You can try hundreds of practice questions, organized by skill, online in My College QuickStart (www.collegeboard.org/quickstart).



NEXT STEPS
On test day, you told us that you're interested in **Sport & Fitness Administration/Management**.
Go online to see your projected SAT scores, learn how to improve them, and find critical college and career planning information.
To learn more about college majors, visit My College QuickStart™. There you can also:
• Learn about related careers
• Search for colleges
• Take a personality test

Take the next step today! Go to www.collegeboard.org/quickstart and sign in using your code below.
Online Access Code
A02670146P

Your Answers

You will get your test book back with your PSAT/NMSQT results, so that you can review the questions.

You can also review each test question in My College QuickStart.

Name: **STUDENT, MA B** Year: **2011** Grade: **11** School Code: **123456** Optional Code: **00** Student Copy

PSAT/NMSQT® Score Report Plus

Your Score
Section Score projected SAT score range are similar.
Percentile of test-takers below your score.

U.S. National Merit Scholarship Corporation
A Selection Index score of 28 or higher on PSAT/NMSQT is an invitation to participate in a national scholarship review process.

Your Score
These skills can help you understand how you did on the test. To learn more and review your improvement plan, go to www.collegeboard.org/quickstart and enter your code below.

College Access Code: **A0267**

Your Answer
See test question explanations at www.collegeboard.org/quickstart. You can also ask your counselor for more information on how to review the questions.

Key
✓ Correct
○ Incorrect
✗ Incomplete

Scoring
• Correct answer
• Omitted answer
• Wrong answer
• Wrong answer - NO
• Wrong answer - NO/IL
• Points are broken down as follows.

Next Steps
Go online to www.collegeboard.org/quickstart to improve your college and career information.

Question	Correct Answer	Your Answer	Difficulty
1	A	✓	e
2	B	✓	e
3	A	C	m
4	C	A	h
5	B	E	h
6	D	✓	e
7	B	✓	m
8	D	o	e
9	B	✓	m
10	E	B	h
11	D	✓	h
12	C	✓	m
13	A	✓	m
14	B	A	m
15	A	✓	e
16	C	✓	m
17	A	✓	e
18	E	✓	m
19	B	✓	m
20	B	E	m
21	E	✓	m
22	D	B	h
23	E	✓	m
24	A	✓	m

Mathematics

52
You scored higher than 57% of juniors.

Writing Skills

44
You scored higher than 39% of juniors.

Lightbulb Information
If your Selection Index places you among the 55,000 high scorers who qualify for program recognition, you will be notified next September.

Number & Operations
2 of 5 questions correct (1 omitted)

Algebra & Functions
0 of 5 questions correct (0 omitted)

Geometry & Measurement
0 of 18 questions correct (2 omitted)

Data, Statistics & Probability
0 of 8 questions correct (1 omitted)

Grammatical Relationships between Words
3 of 12 questions correct (1 omitted)

Words & Phrases Used to Modify or Compare
1 of 5 questions correct (2 omitted)

Phrases & Clauses
6 of 10 questions correct (2 omitted)

Correctly Formed Sentences
1 of 6 questions correct (4 omitted)

Relationships of Sentences & Paragraphs
2 of 6 questions correct (3 omitted)

Get suggestions for improving your skills before you take the SAT.
www.collegeboard.org/quickstart

Question	Correct Answer	Your Answer	Difficulty
1	D	✓	m
2	G	✓	h
3	G	✓	h
4	C	✓	h
5	B	✓	h
6	B	✓	h
7	C	o	h
8	A	✓	m
9	B	✓	m
10	C	✓	m
11	B	o	m
12	C	✓	m
13	D	o	m
14	A	o	h
15	G	o	h
16	A	o	h
17	A	o	h
18	C	o	h
19	C	o	h
20	C	o	h
21	C	o	h
22	C	o	h
23	C	o	h
24	C	o	h

Correct Answer: 7
Your Answer: m

Correct Answer: 3
Your Answer: o

Correct Answer: 6.5 or 50
Your Answer: o

Correct Answer: 1000
Your Answer: ✓

Correct Answer: 10, 15, 14, or 16
Your Answer: h

Correct Answer: 85 or 15
Your Answer: h

Correct Answer: 25
Your Answer: ✓

Correct Answer: 104
Your Answer: h

Correct Answer: 12
Your Answer: m

Correct Answer: 4
Your Answer: 10

Correct Answer: 1
Your Answer: ✓

Correct Answer: 2
Your Answer: ✓

Correct Answer: 3
Your Answer: ✓

Correct Answer: 4
Your Answer: ✓

Correct Answer: 5
Your Answer: ✓

Correct Answer: 6
Your Answer: ✓

Correct Answer: 7
Your Answer: ✓

Correct Answer: 8
Your Answer: ✓

Correct Answer: 9
Your Answer: ✓

Correct Answer: 10
Your Answer: ✓

Correct Answer: 11
Your Answer: ✓

Correct Answer: 12
Your Answer: ✓

Correct Answer: 13
Your Answer: ✓

Correct Answer: 14
Your Answer: ✓

Correct Answer: 15
Your Answer: ✓

Correct Answer: 16
Your Answer: ✓

Correct Answer: 17
Your Answer: ✓

Correct Answer: 18
Your Answer: ✓

Correct Answer: 19
Your Answer: ✓

Correct Answer: 20
Your Answer: ✓

Correct Answer: 21
Your Answer: ✓

Correct Answer: 22
Your Answer: ✓

Correct Answer: 23
Your Answer: ✓

Correct Answer: 24
Your Answer: ✓

Find out why you missed questions.
www.collegeboard.com/sat/quickstart

Take the next step today! Go to www.collegeboard.org/quickstart and sign in using your code below.

College Access Code: **A026714CP**

Your Answers: Student-Produced Responses

Some of the math problems required you to grid in answers instead of selecting an option. For these questions, you will see the correct answer(s) written out.

Name: **STUDENT, MA B** Year: **2011** Grade: **11** School Code: **123456** Optional Code: **00** Student Copy

PSAT/NMSQT™ Score Report Plus

Critical Reading	Mathematics	Writing Skills
50	52	44
Score Range: Scores in this range are similar to yours.	Score Range: Scores in this range are similar to yours.	Score Range: Scores in this range are similar to yours.
Percentile: The percentage of test-takers who scored below your score.	Percentile: The percentage of test-takers who scored below your score.	Percentile: The percentage of test-takers who scored below your score.

National Merit Scholarship Corporation
 National Merit Scholarship Corporation (NMSC) uses PSAT/NMSQT™ scores as an initial screen of over 1.5 million students who enter its scholarship programs. See [www.nmsc.org](#) for more information.

Year Selection Index
 Sum of scores in critical reading, mathematics and writing skills: **146**

Percentile
 Compares your performance with college-bound juniors: **47**

Entry Requirements
 Information you provided on your answer sheet:
 High school student: **Yes** U.S. citizenship: **Yes**
 Year to complete high school and enroll full-time in college: **2013**
 Years to be spent in grades 9-12: **4**

Eligibility Information
 If your Selection Index places you among the 5,000 high scorers who qualify for program recognition, you will be notified next September.

Your Skills

Deconstructing the Meaning of Words	Number & Operations	Grammatical Relationships between Words
9 of 18 questions correct (50 percent)	12 of 15 questions correct (80 percent)	3 of 12 questions correct (25 percent)
Author's Craft: Style, Tone & Technique	Algebra & Functions	Words & Phrases Used to Modify or Compare
3 of 6 questions correct (50 percent)	5 of 6 questions correct (83 percent)	1 of 6 questions correct (17 percent)
Reasoning & Information	Geometry & Measurement	Phrases & Clauses
3 of 6 questions correct (50 percent)	3 of 6 questions correct (50 percent)	3 of 6 questions correct (50 percent)

Online Access Code
A02670146P

Question Number	Correct Answer	Your Answer
29	7	✓ m
30	3	✓ m
31	4.5 or 9/2	✓ m
32	1000	✓ m
33	10, 12, 14, or 16	✓ h
34	8/5 or 1.6	✓ h
35	29	✓ h
36	108	50.9 h
37	42	4.2 m
38	8	10 h

Your Answers
 See test questions and explanations of the test at [www.collegeboard.com/psatnmsqt](#).
 You can also ask your counselor for a copy of test book back as you review the questions.

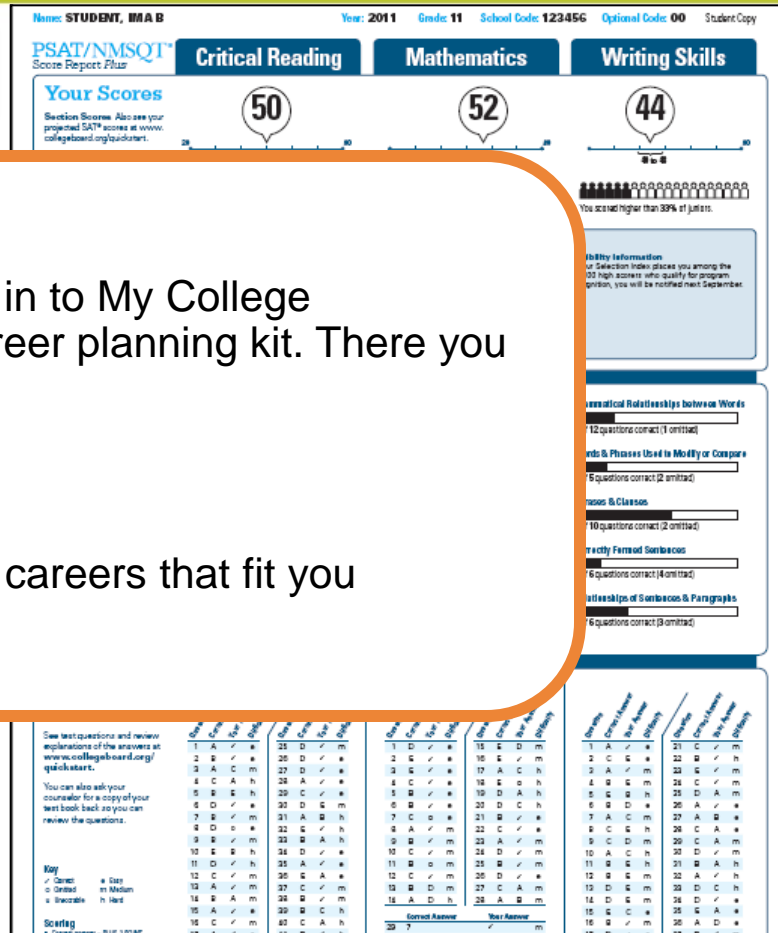
Key
 ✓ Correct ✗ Incorrect
 ○ Omitted ✗ Incomplete ✗ Invalid

Scoring
 • Correct answer = PLUS 1 POINT
 • Omitted answer = 0 POINTS
 • Wrong answers to multiple-choice questions = MINUS 1/4 POINT
 • Wrong answers to math questions = MINUS 1/4 POINT
 • Points are totaled then converted to the 20-80 scale.

Next Steps
 On test day, you told us that you're interested in **Sport & Fitness Administration/Management**. To learn more about college majors, visit [MyCollegeQuickStart™](#). There you can also:
 • Learn about related careers
 • Search for colleges
 • Take a personality test

Take the next step today! Go to [www.collegeboard.org/quickstart](#) and sign in using your code below.
Online Access Code
A02670146P

Next Steps



What's next?

Use the access code on your report to log in to My College QuickStart, a personalized college and career planning kit. There you can:

- Search for colleges
- Get a personalized SAT study plan
- Take a personality test to find majors and careers that fit you

www.collegeboard.org/quickstart

Next Steps

Go online to see your projected SAT scores, learn how to improve them, and find critical college and career planning information.

On test day, you told us that you're interested in **Sport & Fitness Administration/Management**

To learn more about college majors, visit My College QuickStart™. There you can also:

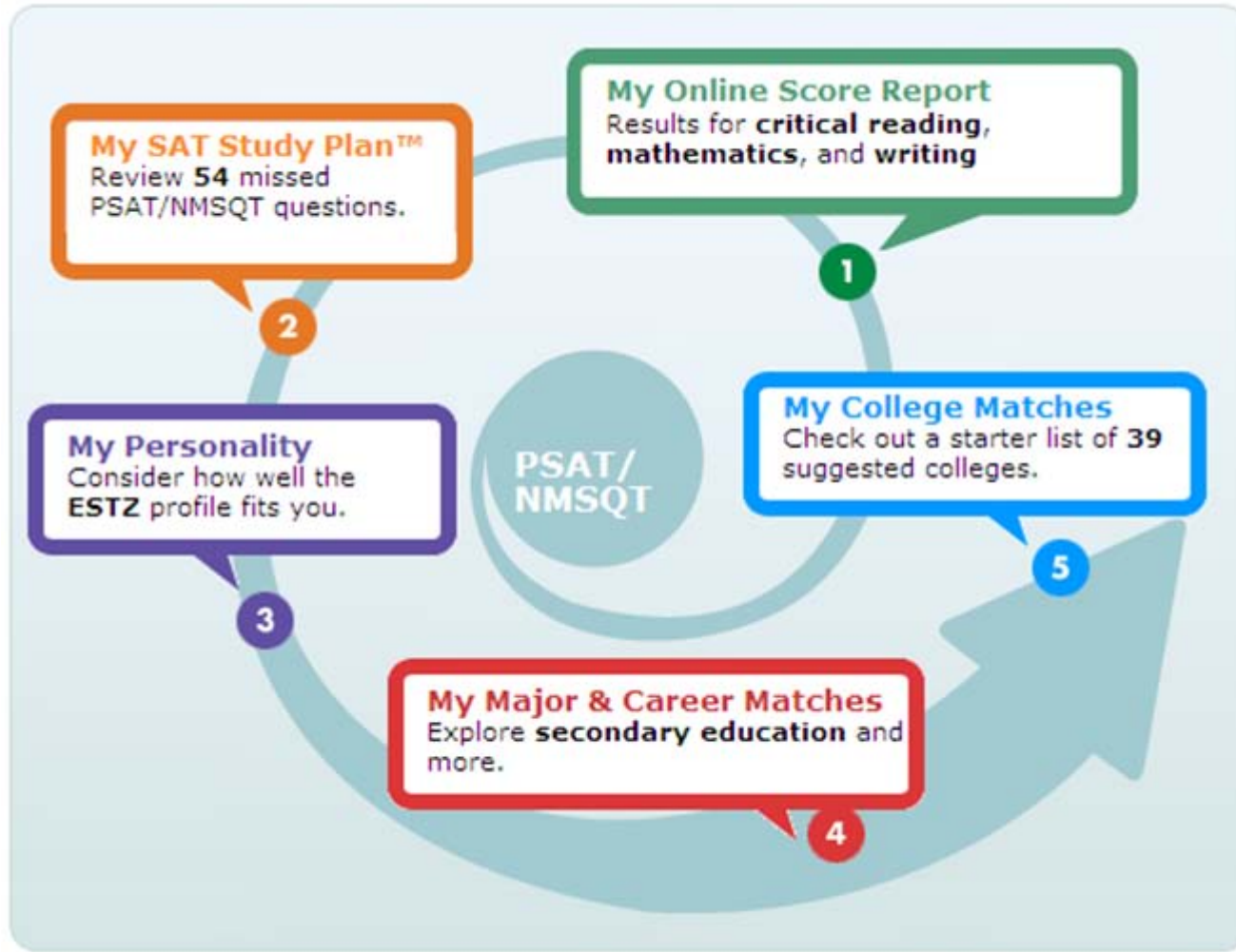
- Learn about related careers
- Search for colleges
- Take a personality test

Take the next step today! Go to www.collegeboard.org/quickstart and sign in using your code below.

Online Access Code
A02670146P



My College QuickStart



My College QuickStart

My Online Score Report

- Projected SAT® score ranges
- State percentiles
- You can filter questions
- Questions and answer explanations

My College Quickstart

Home > My Organizer > My College QuickStart > My Online Score Report.

My Online PSAT/NMSQT Score Report

Critical Reading Mathematics Writing Skills

Your Score

Section Score **50**

Score Range 46 to 54

Projected SAT Score Range **470 to 570**

National Percentile You scored higher than 72% of juniors in the nation

State Percentile You scored higher than 80% of juniors in your state

Your Skills **Your Answers**

Filter your answers by

-- skills --

-- difficulty --

correct answers (✓) incorrect answers omitted

Submit

Q#	Correct Answer	Your Answer	Difficulty	Content Skill	Process Skill
01	D	✓	hard	Data, Statistics + Probability	Connections
02		omitted	easy	Number + Operations	Representation
03	C	✓	medium	Algebra + Functions	Problem Solving

My College QuickStart

My SAT Study Plan™

- Personalized skills to improve
- SAT practice questions
- An official SAT practice test

My SAT Study Plan™

Study Plan Home Meet the SAT Critical Reading Mathematics Writing **Practice Test**

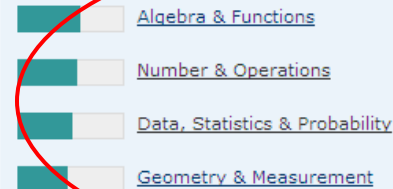
Review & Practice My Skills Feedback Get Test-Taking Advice

My Skills Feedback

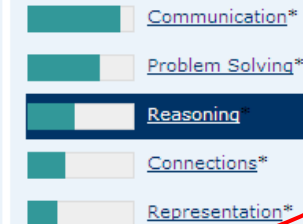
This feedback was created especially for you, based on your PSAT/NMSQT results.

1. Select a skill with a lower performance bar and review the test questions you answered incorrectly. Then try the question again and read the answer explanations.
2. If you find the practice questions too easy, you're probably ready for the next harder level. If you find them too hard, try the next easier level.

Content Skills



Process Skills



* These math-only process skill groups were not included on your Score Report *Plus*.

Skill Group: Reasoning

3 of 7 correct (1 omitted)

Definition	Answers	#	Questions
Develop and use mathematical arguments and proofs to explore the truth of conjectures and justify conclusions.	Omitted	1	37 (view all)
	Incorrect	3	16, 26, 35 (view all)
	Correct	3	10, 22, 32 (view all)

Practice Now

Skills **too easy**? [Try some harder practice questions](#)

Skills **too hard**? [Try some easier practice questions](#)

My College QuickStart

INSIGHTS

I.D. ME

EXPLORE MAJORS

FIND A COLLEGE

RESEARCH CAREERS

I.D. ME

Introduction

QuickStarts

ORA Personality Profiler®

View My Profile

THE TROUBLESHOOTERS

ISTA

ISFA

ESTA

ESFA

THE TRADITIONALISTS

ESTZ

ESFZ

ISTZ

ISFZ

THE CATALYSTS

INFA

ENFA

ENFZ

INFZ

The Traditionalists

▶ ISFZ The Provider

introverting feeling
sensing organizing

ISFZs are responsible, caring, reserved, and cooperative. As an ISFZ you have a modest style of helping others in orderly and practical ways. You believe it is important to follow rules and laws; similarly, you adhere to routine and prefer to see traditions preserved with little change. You are prone to worry about things beyond your control and may appear to be less confident because of your tendency to become stressed or agitated and not ask for help.

About 6%
of MyRoad
participants

You like to be with a few close friends and family members and to offer personal support wherever and whenever needed. You are good at coordinating tasks and activities for everyone but may become overburdened by taking on other people's problems. Likewise, you don't ask for the recognition you would like to have. You are quietly loyal to family, friends, and groups and institutions that are important to you, and you hope others will be as loyal in return. You avoid interpersonal conflict at all costs.

As an ISFZ you are an organized and focused learner who is good at memorizing facts and details related to people. You reliably meet deadlines and obligations. You excel at coordinating and scheduling your own activities and keep yourself and your belongings neat and in good order. You prefer to work on projects and tasks that are useful in a practical way.

▶ Your Strengths Include...

- A practical and dependable nature.

My College QuickStart

My College Matches

- Starter list of colleges
- Criteria to customize search
- Ability to save searches

City University of New York: Hunter College
New York, New York
College Board code: 2301

[Add to List](#)
[Compare](#)
[Find Similar](#)
[Map It](#)
[Print Full Profile](#)
[Send to a Friend](#)

At a Glance Deadlines	Admission SAT®, AP®, CLEP®	Cost & Financial Aid Majors	Academics & Support Housing & Campus Life	Sports International Students
---	--	---	---	---

Main Address
 695 Park Avenue
 New York, NY 10065
 (212) 772-4000
www.hunter.cuny.edu

Admission Office
 695 Park Avenue
 New York, NY 10065
 (212) 772-4490
admissions@hunter.cuny.edu
 Contact: William Zlata
 Director of Admissions

Type of School
 Public
 Liberal Arts College
 Four-year
 Coed
 Percent applicants admitted: 28%
 Regionally Accredited
 Middle States Association of Colleges and Schools
 College Board member

Calendar: Semester
Degrees offered:

- Bachelor's
- Master's

Setting
 Urban setting
 Very large city (over 500,000)
 Commuter campus

Size
 Total undergrads: 15,698
 First-time degree-seeking freshmen: 2,042
 Degree-seeking undergrads: 14,709
 Graduate enrollment: 5,560

My College QuickStart

INSIGHTS
I.D. ME
EXPLORE MAJORS
FIND A COLLEGE
RESEARCH CAREERS

CIVIL ENGINEERING

[Overview](#) |
 [High School Courses](#) |
 [College Courses](#) |
 [Career Connection](#) |
 [Perspectives](#)

[Majors A-Z](#)

[My Interest](#)

High
Medium
None

Updated: 8-31-2009

[Topics](#)


[Construction Engineering & Management](#)

[Environmental Engineering](#)

[Geological Engineering](#)

[Geotechnical Engineering](#)

[Mining Engineering](#)



Overview


The ancient Egyptians built pyramids and levees. The Romans built aqueducts and the Colosseum. The Persians and ancient Greeks undertook massive building projects. Civil engineering has been practiced for thousands of years.

Civil engineers plan, design, build, and repair just about anything you can think of. That includes buildings, bridges, dams, tunnels, highways, stadiums, sewage treatment plants, power plants, airports, and even satellites. These days they're also in demand to repair the damage caused by natural disasters such as earthquakes, hurricanes, and floods. And our crumbling public structures, from bridges to tunnels, all need civil engineers to repair them.

Civil engineers plan, design, build, and repair just about anything you can think of.

Civil engineers specialize in different areas. Transportation engineers, for example, tackle problems like traffic jams and air travel safety. Water resources engineers work to control the flow of rivers and ensure clean drinking water.

As a civil engineering major, you'll take classes in several fields before focusing on one. But you'll find there's overlap in some course work. For instance, you'll learn how to build structures that can stand up to earthquakes in both geotechnical and structural engineering. In a geotechnical engineering course, you'll focus on soil structure and foundation design. But when you study structural engineering, you'll be more concerned with designing



My College QuickStart

Log in to your personalized account at

www.collegeboard.org/quickstart